

AERO ensures healthy
indoor air³

The wall-mounted ventilator range for
a healthy home.

Window systems

Door systems

Comfort systems

We bring spaces to life.



AERO enhances well-being.

Three dimensions and four walls result in a space. But still no living space. Because that is a dynamic construction of many factors and functions: security, comfort, health, aesthetics, sustainability, energy efficiency and much more. But the focus is always on people.

In short: A space is a system and a wall-mounted ventilator, therefore, is not just a ventilator. It is part of the system that brings spaces to life and gives people a sense of well-being. Living spaces.

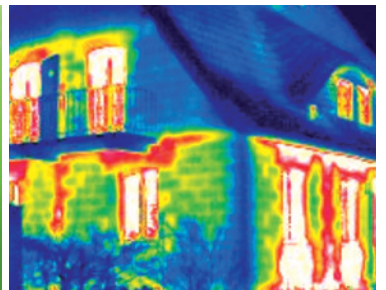
This kind of thinking in terms of systems has a long tradition at SIEGENIA. Today, we are the leading system provider of room comfort: with window, door and comfort systems. Clever wall-mounted ventilators that react flexibly to air quality and also recover heat from the air are just one example of room comfort of the future.

Room comfort is thus no longer the sum of many detailed solutions, but the result of a holistic approach. To convert diverse requirements, expectations and needs into innovative and marketable solutions is what drives us. For example, with our AERO wall mounted ventilators.

With a breath of fresh air, AERO brings more room comfort into the home – oxygen-rich, filtered air lets everyone breathe more freely. And what's more, they can breathe a sigh of relief as their heating costs are reduced and their property retains its value. In terms of assembly and retrofitting, AERO wall mounted ventilators continue to stand for greatest possible flexibility and simplified procedures.



It's no secret
that you need to ventilate.



Controlled ventilation for an indoor environment that is positive in every way.

A well controlled, healthy indoor environment performs several tasks simultaneously: It doesn't just support our well-being and performance levels, it also provides lasting protection to the building structure from humidity and mould.

Intelligent solutions are needed to satisfy energy concerns relating to building ventilation. This is because conventional window ventilation is reaching its limit. The use of controlled ventilation technology also offers real benefits for intruder protection.

Healthy fresh air without harmful substances or noise.

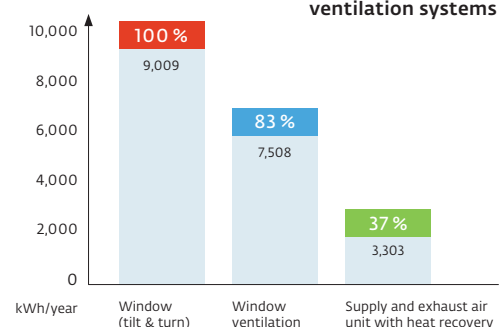
Your well-being, productivity and quality of life are all influenced by the air. A lower CO₂ level helps concentration. An optimal relative humidity of 40 – 60% keeps bacteria, viruses and mould at bay. The damage caused by fine dust, fumes and pollen can also be kept in check with the right technology. However, protection from noise is always a must for a truly untroubled and pleasant environment. The continually increasing noise pollution from road, rail and air traffic is today the number 1 stress factor. This can lead to insomnia, heart and digestion problems and even deafness.

Truly cost effective with sustainable energy efficiency.

The new German Energy Saving Regulations (EnEV) and the energy performance certificate have set a clear target for the considerable reduction of energy consumption in buildings. This is possible with well insulated and particularly air-tight building shells, which noticeably reduce heat loss and heating costs as a result. But controlled ventilation technology using window-mounted and wall-mounted ventilators is also a deciding factor here. This is because air exchange by the conventional method of opening the window will very quickly cancel out the heating energy saved. For this reason, numerous incentive programmes also support the installation of energy-efficient ventilation devices in many cases.



Trend towards energy loss of different ventilation systems



Our innovative wall-mounted ventilators.
The right solution for every need.

Page 11

AEROTUBE system

The discreet wall-mounted ventilator with supply air and/or exhaust air operation, heat recovery and humidity sensor.















Page 14

AEROVITAL® ambience

The modern wall-mounted ventilator with effective sound absorption, heat recovery and special comfort functions.



An overview of the many different configuration options:

Ventilator type	Airflow	Filter technology	Ventilator benefits
<div> <div>  </div> <div>Active ventilator</div> </div>	<div> <div>  </div> <div>Supply air</div> </div>	<div> <div>  </div> <div>Coarse dust filter</div> </div>	<div> <div>  </div> <div>Sound insulation</div> </div>
<div> <div>  </div> <div>Passive ventilator</div> </div>	<div> <div>  </div> <div>Supply air and exhaust air</div> </div>	<div> <div>  </div> <div>Fine dust and pollen filter</div> </div>	<div> <div>  </div> <div>Humidity control</div> </div>
	<div> <div>  </div> <div>Supply air or exhaust air</div> </div>	<div> <div>  </div> <div>Activated carbon filter</div> </div>	<div> <div>  </div> <div>Heat recovery</div> </div>
			<div> <div>  </div> <div>Suitable for bedrooms</div> </div>

10

16

17












AEROPAC®

The small sound-absorbing ventilator with big benefits: quiet, powerful, easy to use, quick to install.











AEROVITAL®

The universal ventilator with pollen protection, heat recovery and total convenience.











AEROLIFE®

The energy-saving universal ventilator with pollen protection and heat recovery.

17

Sensors

18

Accessories

19









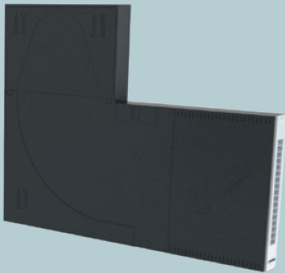
AEROPLUS®

The pro for indoor climate control and dehumidification.



SENSOAIR

The intelligent air quality sensor with CO₂ and VOC control for activating window and wall-mounted ventilators.



Vent duct EPP

The vent duct ensures a clear, undisturbed facade view and optimum sound absorption.

Our wall-mounted ventilators:
A small investment with a big payoff.



Flexible solutions for retrofitting.

Wall-mounted ventilators by SIEGENIA not only ensure a controlled supply of fresh air, they also fulfil a range of important additional functions for the well-being of people. Depending on the type of ventilator, capabilities stretch from optimal sound absorption and heat recovery, to integrated humidity control and highly effective filter technology.

Particularly in renovations, there is a lot to be said for using high performance wall-mounted ventilators. They can also be integrated very flexibly into building plans at a later date. There is no need to replace the window and the ventilator installation is impressively quick and easy without the trouble of laying pipes through the rooms. When it comes down to it, this not only keeps costs low, the dust-free installation also avoids the bothersome mess caused by construction.

In addition to the installation features, our wall-mounted ventilators also excel for being notably user and maintenance friendly. Let's look at the AEROPAC® as an example. Maintenance consists of simply washing the filter one to two times a year or replacing it. The integrated filter change indicator reliably specifies the optimum time. The front panel that can be opened by hand and the use of filter cassettes enable the filter to be changed quickly and conveniently without any tools.

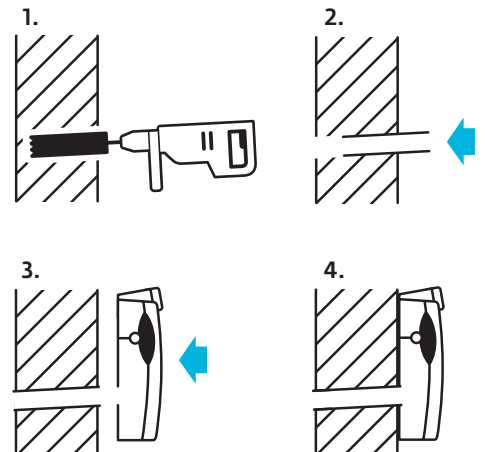
Simple filter replacement:

- Open the ventilator hood
- Remove the filter
- Clean or replace the filter



Quick and clean installation in approx. 45 minutes:

1. Use a drilling template to adjust the drill with dust extraction device
2. Cut the pipe length down to thickness of the wall, install carefully and seal on both sides
3. Install the ventilator on the wall
4. Mount and seal the weather grille on the outer wall. Insert the plug into the socket and it is ready for use





AEROPAC®

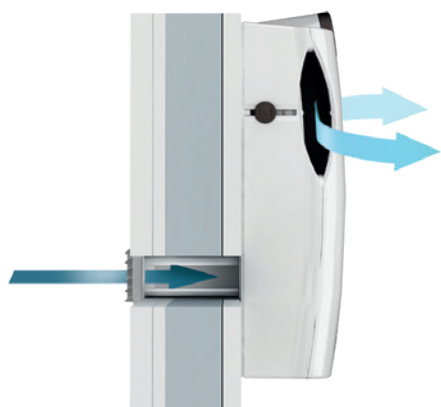
The small sound absorbing ventilator with big benefits: quiet, powerful, easy to use, quick to install.



There is a proven solution that has been used in countless projects to combat the increased noise pollution from fresh air supply systems: Our AEROPAC® sound-absorbing ventilator – compact, quiet as a whisper, and with well over one hundred thousand installations. In combination with sound insulated windows, its sound absorption makes your own four walls a place of tranquility and relaxation again, regardless of road, rail or air traffic outside. Other environmental problems such as fine dust and pollen stay outside too, thanks to three different, optional filters. The air throughput of the AEROPAC® can be conveniently set at several levels, as required, via the LCD. This little all-rounder consumes just 5W at 60m³/h.

Fresh air without the noise, pollen or fine dust:

- Controlled extraction of fresh air through the external wall – quiet, energy-saving, and with optimal sound absorption
- The air is cleaned through a coarse dust filter, an optional pollen/fine dust filter or an activated carbon filter
- Individual control via a slider on the side – even, draught-free fresh air supply

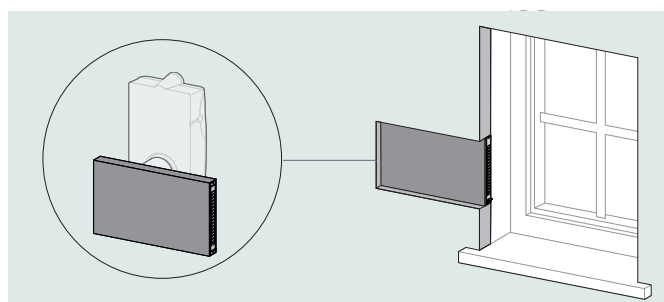


AEROPAC® product features:

- Highly effective sound absorption for a quiet and peaceful sleep
- Draught-free ventilation, quiet as a whisper
- LCD display: Air flow setting and programmable timer
- Individual air control via sliders on the side
- 3 optional filters: coarse dust, activated carbon, and fine dust/pollen
- Filter cassettes and a change indicator make changing the filter easy
- Extremely small dimensions and elegant, high-gloss casing
- Can be subsidised up to 100 %
- AEROPAC® can be easily installed on the sill
- The smart version can be operated with the SIEGENIA Comfort app

Simple installation:

- Core drill a hole in the outer wall
- Fix pipe and weather grille in place
- Alternative installation with vent duct EPP, for example, for composite thermal insulation systems



INSTALLATION OPTION VENT DUCT EPP, TYPE FL



AEROTUBE system

The discreet Wall- mounted ventilator with supply air and/or exhaust air operation, heat recovery and humidity sensor.



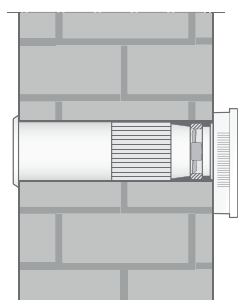
Little effort, big impact: In the "category" of modern pipe wall ventilators, AEROTUBE sets the tone. All of its technology is in the wall, more specifically: hidden in the tube. Due to its versatility, a wide range of ventilation requirements can be achieved individually, or as part of a system: The appropriate solution for practically every requirement whether this is active or passive, with or without heat recovery, air supply or exhaust air operation.

Variants of AEROTUBE:

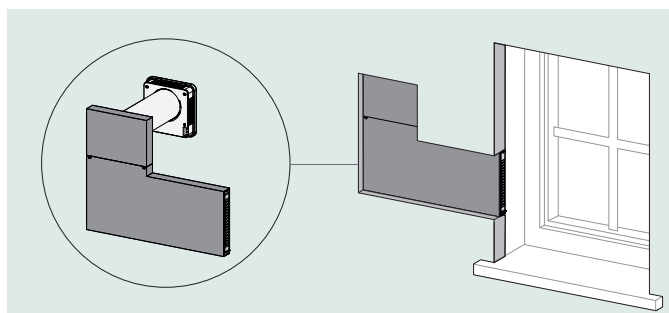
- **AEROTUBE WRG smart:** Ventilation unit which can switch between supply and exhaust air and heat recovery
- **AEROTUBE AZ smart:** Ventilation unit can be used as a supply air or exhaust air unit
- **AEROTUBE DD 110 and 160:** Ventilation unit on a pressure differential basis, can be used for supply or exhaust air, vent duct optional

AEROTUBE product benefits:

- Elegant interior appearance and low space requirement: Functional elements are located in the pipe
- Different device versions
- Heat recovery up to 90 %, exhaust air/supply air
- Suitable for renovations and new builds
- Devices with manual locking or optionally with electrical locking
- Intelligent networking without a separate cable in the "smart" version
- The air direction can also be assigned after installation
- Operation via smartphone or tablet in the "smart" version
- Efficient humidity control as standard in the "smart" version
- Vent duct EPP for AEROTUBE DD 110 and AEROTUBE DD 160
- Sound absorption requirements up to 72 dB possible



STANDARD INSTALLATION AEROTUBE WRG smart



INSTALLATION OPTION VENT DUCT EPP, TYPE SFL



AEROTUBE DD 110 and 160

The pressure differential ventilator with a discreet appearance and optional accessories.



With the AEROTUBE DD 110 and 160 versions, the AEROTUBE system covers the demand for passive ventilation based on the natural pressure differential. The pipe diameters of 110 or 160 mm ensure the necessary flexibility in planning, a choice of two covers provides a discreet interior appearance. Besides the standard weather grille, AEROTUBE can also be installed with a stainless steel weather grille. With the optional vent duct EPP, you will achieve a clear, unobstructed facade view and increased sound absorption.

AEROTUBE DD 160 is optionally available with a wind pressure barrier or up to four sound insulation elements.

AEROTUBE DD 110 or 160 mode of operation at a glance:

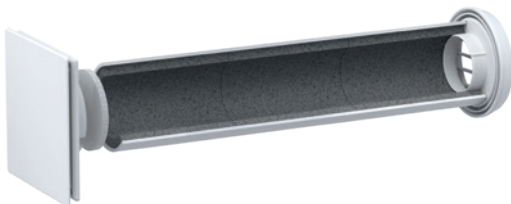
- Supply air and exhaust air on a pressure differential basis
- Cross ventilation (at least 2 devices required)

AEROTUBE product benefits:

- Low space requirement: Functional elements are located in the pipe
- Discreet inner panel in two versions
- Pipe diameter 110 or 160 mm
- Suitable for renovations and new builds
- DD 160 optionally available with wind pressure barrier or up to four sound insulation elements
- Installation also with vent duct EPP
- Sound absorption requirements up to 72 dB possible
- Optionally with stainless steel weather grille

Simple installation:

- Core drill a hole in the outer wall
- Fix pipe and weather grille in place
- Installation of the inner panel
- Alternative installation with vent duct EPP, for example, for WDVS





AEROTUBE WRG smart
The wall-mounted ventilator for alternating supply air and exhaust air with heat recovery.



AEROTUBE AZ smart
The wall-mounted ventilator for supply and exhaust air operation with high air throughput.



The extremely energy-efficient AEROTUBE WRG smart adapts the volume flow to the room conditions automatically and based on demand. The economic operating mode coupled with high heat recovery leads to one of the most energy-efficient devices in its class and it has been granted the A+ label. It can be used in pairs, also spanning the room and controlled via the SIEGENIA Comfort app. Its special feature: The devices communicate not only with your smartphone, but also with each other via WLAN, which significantly reduces wiring. The alternating mode of operation permits air supply and exhaust air extraction with heat recovery in minute cycles. Air supply or exhaust air operation is also possible in case of demand.

AEROTUBE WRG smart mode of operation at a glance:

- Supply and exhaust air operation with heat recovery
- Single operation or operation in pairs, also spanning the room
- Alternating operation mode
- Cycle times approx. 1 minute
- Exhaust air operation/Supply air operation/Cross ventilation

Wherever there is a demand for supply air or exhaust air operation, with its uniform appearance, the AEROTUBE AZ active ventilator can be used as a supply air unit in one room and as an exhaust air unit in another room. Operation in pairs is also possible or in combination with other AEROTUBE versions without any problems. The WLAN function is also available as standard with the AEROTUBE WRG smart, thus enabling operation via the SIEGENIA Comfort app

AEROTUBE AZ operating modes at a glance:

- Single operation or operation in pairs, also spanning the room
- Exhaust air operation / Supply air operation
- Cross ventilation (at least two devices required)
- Can be subsequently retrofitted with heat recovery

Simple installation:

- Core drill a hole in the outer wall
- Fix pipe and weather grille in place
- No wiring for paired devices
- Subsequent function assignment of devices possible on site and after installation
- Alternative installation with vent duct EPP, for example, for WDVS



AEROTUBE WRG smart



AEROTUBE AZ smart



AEROVITAL® ambience

The modern wall-mounted ventilator with high sound absorption, heat recovery and special comfort functions.



Fresh air is our most important sustenance and is essential for our health. The AEROVITAL ambience wall-mounted ventilator exists so that we can enjoy the best air quality in relaxed tranquility. With effective sound absorption and clever comfort functions, it maintains a healthier indoor environment, saves energy and supplies filtered fresh air when windows are closed, likewise providing additional benefits for controlled home ventilation: The modern, flat design is as impressive as the low energy consumption, low inherent noise with high air throughput and superior sound absorption. Its excellent heat recovery rate of more than 85 % makes it a true ace in terms of energy efficiency.

When equipped with WLAN control in the "smart" version, the ventilator can be easily and conveniently operated by smartphone or tablet via the SIEGENIA Comfort app. Maximum convenience is achieved by different functions, e.g. automatic mode or the timer, into which up to five times can be programmed for user-dependent ventilation. Both the ventilator and the app are equipped with a filter change indicator.

Simple installation:

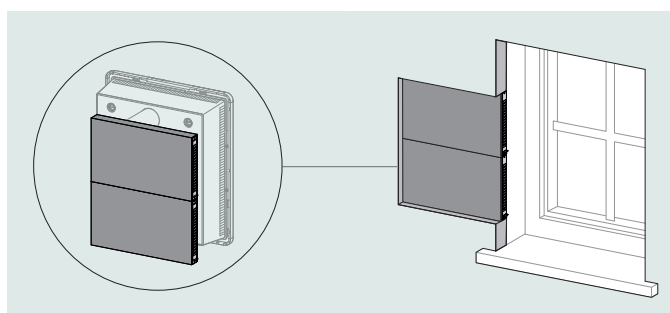
- Drill two holes with Ø 8 cm openings in the outside wall
- Fix pipe and weather grille in place
- On-wall and in-wall mounting possible
- No wet drilling required
- Installation is also possible in inhabited buildings
- Alternative installation with vent duct EPP, type FL, for example, for WDVS

AEROVITAL® ambience product benefits:

- Pollen-filtered fresh air supply with closed windows (filter type M5)
- Controlled domestic ventilation
- Very low inherent noise with high air throughput up to 60 m³/h
- Sound absorption from 54 to 58 dB
- Energy efficient ventilation due to heat recovery – heat recovery efficiency over 85 %
- Blower with 5 settings
- Automatic temperature and humidity control
- Summer / winter mode (bypass function)
- Control via panel on unit
- Manual or automatic control

Additional equipment in the AEROVITAL ambience smart version:

- Air quality sensor with CO₂ and VOC control
- Simple operation via smartphone or tablet using the SIEGENIA Comfort app
- Continuous control of the air throughput
- Up to 5 timers programmable
- Freely selectable mode of operation
- Display of temperature, air humidity, air quality, filter change
- Energy label: A+



INSTALLATION OPTION VENT DUCT EPP, TYPE FL



All functions at a glance:	AEROVITAL ambience	"smart"
Intelligent humidity control	●	
Air quality control		●
Automatic operation humidity control	●	●
Automatic operation air quality		●
5-step operation on device	●	●
Continuous control via app		●
Summer operation on the device	●	●
Filter change indicator on the device	●	●
Filter change indicator via app		●
LED status indicator on the device	●	●
WLAN		●
WLAN operation without external router		●
Operation via app		●
Timer operation via app		●
Indication of operating hours via app		●
Supply air operation only		●
Exhaust air operation only		●
Air supply and exhaust air extraction without heat recovery		● ●
Cross ventilation with two devices		●
SIEGENIA Comfort app free of charge		●

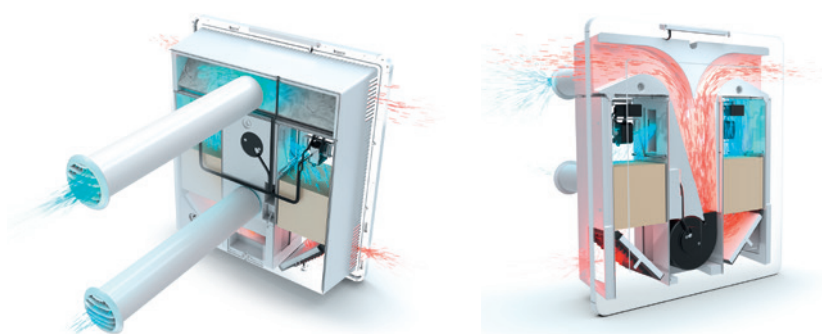
More freedom of design.

With its extremely clear, contemporary design the ventilator elegantly fits into every room design. The possibility to partially embed it in the wall extends your range of design.

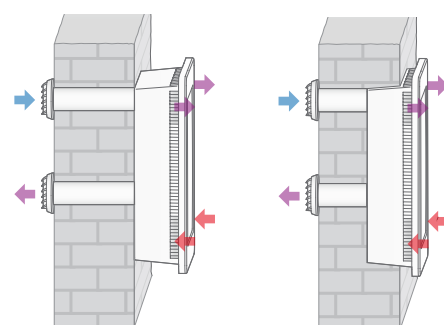
The installation locations are entirely flexible: From inside wall installation to positioning on the jam wall and extending to the version with vent duct. Installation is possible in inhabited buildings at any time and is accomplished in about one hour.

Flexible operation.

If you do not have your smartphone at hand, you can easily operate the AEROVITAL ambience smart on the device.



FUNCTIONAL PRINCIPLE: SUPPLY AIR AND EXHAUST AIR OPERATION WITH HEAT RECOVERY



ON-WALL / IN-WALL INSTALLATION



AEROVITAL®

The universal ventilator with heat recovery, pollen protection and total comfort.



The AEROVITAL® wall-mounted ventilator increases the quality of life and reduces heating costs at the same time. Many people suffer from allergies and are exposed to the effects of the allergens all day long. This means that the windows at home have to be kept closed. This results in poor indoor air quality, limiting the sense of well-being and productivity. AEROVITAL® provides a supply of fresh air with closed windows. Its pollen filter allows allergy sufferers to breathe freely again and brings new vitality to the building. Besides a pollen filtered air exchange, AEROVITAL® impresses with a high heat recovery rate and very effective sound absorption.

The heat exchanger for AEROVITAL® and AEROLIFE®:

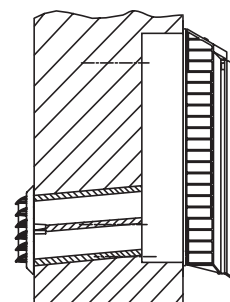
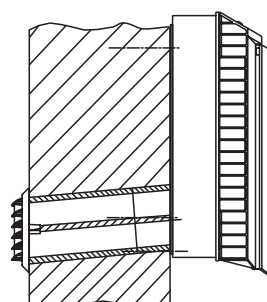
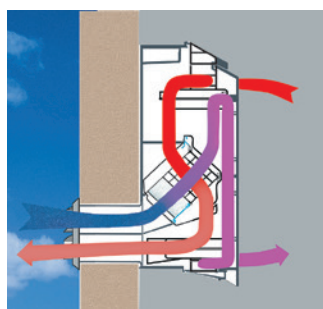
- Fresh, cold outdoor air is drawn in
- Used, warm air from the room is extracted
- Path through the heat exchanger: The heat from the exhaust air is transferred to the supply air, thereby warming it up
- In-flow of heated, fresh air through side openings prevents draughts

AEROVITAL® product features:

- Pollen-filtered fresh air supply with closed windows
- Low internal noise and integrated, high level of sound absorption
- Lower heating costs thanks to heat recovery of up to 73%
- Indicates room temperature, air humidity and whether the filter needs to be replaced
- Convenient remote control and backlit LCD
- Automatic temperature and humidity control
- Blower with 10 settings
- Individual settings can be programmed
- Integrated closing flaps

Simple installation:

- Drill a hole with a diameter of 12 cm in the outer wall
- Fix pipe and weather grille in place
- On-wall and in-wall mounting possible





AEROLIFE®

The energy-saving universal ventilator with pollen protection and heat recovery.



AEROPLUS®

The pro for indoor climate control and dehumidification.



This wall-mounted ventilator scores well too in terms of energy saving ventilation without noise pollution and its pollen filter system. This makes it a particularly good solution for bedrooms and living spaces.

Both AEROLIFE® and AEROVITAL® are suitable for use in new build and renovation thanks to their easy installation.

AEROLIFE® product features:

- The device has 3 setting levels for the blower
- Backlit LCD
- Pollen filtering
- Heat recovery of up to 66%
- Indicates room temperature, air humidity and whether the filter needs to be replaced
- Integrated closing flaps
- Humidity control

Simple installation:

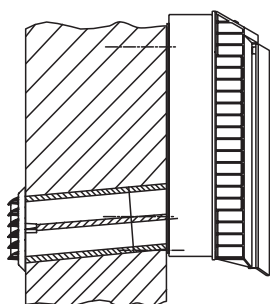
- Drill a hole with a diameter of 12 cm in the outer wall
- Fix pipe and weather grille in place
- On-wall and in-wall mounting possible

This wall-mounted ventilator increases quality of life and offers intelligent protection for people and buildings. Its automatic ventilation and humidity control adjusts itself to the air temperature and humidity required in the room.

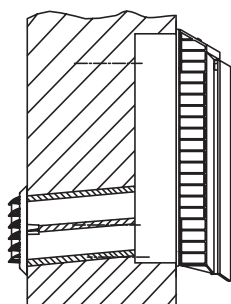
This allows the AEROPLUS® to achieve an optimal, healthy living environment and effectively prevents damage to the building structure and the formation of mould. The heat recovery feature, which results in reduced heating costs, makes this an effective and economical solution.

AEROPLUS® product features:

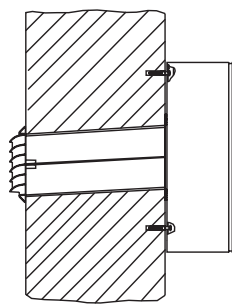
- Healthy living environment and protection for the building structure against damage from humidity
- Automatic control configured to the measured temperature and humidity of the air in the room
- Filtered, pre-heated air supply
- Automatic removal of stale, excessively humid air
- Environmentally friendly heat recovery of up to 68% without condensation
- 12 V low voltage for increased safety, ideal for bathrooms
- Available with an optional electric pipe lock
- Reduced energy consumption due to EC technology



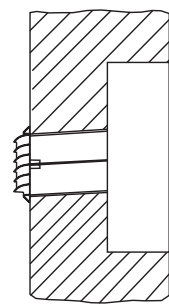
ON-WALL INSTALLATION



IN-WALL INSTALLATION



ON-WALL INSTALLATION



IN-WALL INSTALLATION

SENSOAIR

The intelligent air quality sensor with CO₂ and VOC control for activating window-mounted and wall-mounted ventilators.



The SENSOAIR gives you the green light for clean air and a healthy sense of well-being for maximum benefit. The intelligent air quality sensor registers many different types of pollution in the room air – before the human body can even react and the recommended values have been exceeded. By automatically activating wall-mounted or window-mounted ventilators as needed, it combats CO₂, nicotine, smoke and unpleasant odours. For a quality of air that can be seen. The current status of the air in the room can be checked with a glance at the ventilation traffic lights integrated into the casing.

SENSOAIR product features:

- Recognises many different pollutants in the room air
- For simple, convenient and needs-based ventilation
- Elegant design, trouble-free installation
- Universally suitable for all applications with conventional wiring or WLAN

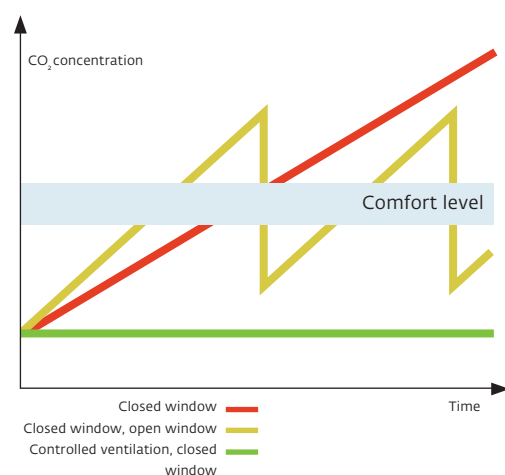
SENSOAIR function options:

- SENSOAIR plus for controlling ventilation units and motorised drives
- SENSOAIR smart for integration in the SIEGENIA Comfort app

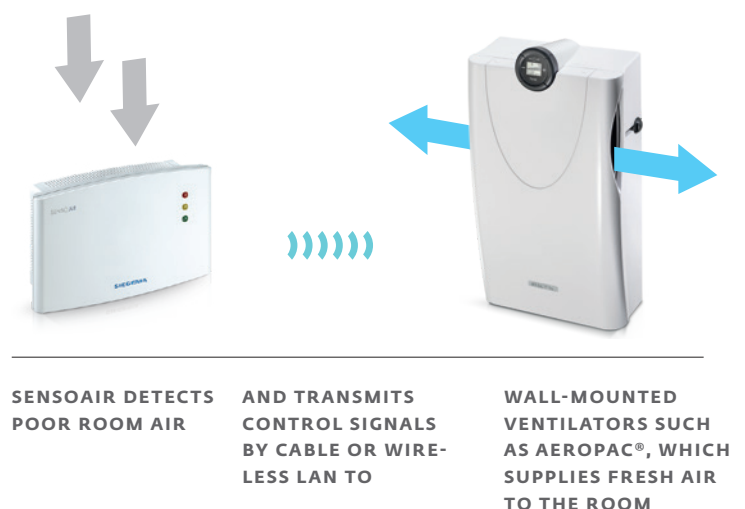
Technical specifications:

- Sensor measuring range: 350–3000 ppm (CO₂ and VOCs)
- Supply voltage: 230 V AC/24 V DC (depending on the unit)
- Power consumption: 1.5 W
- Casing: Surface mounted, ASA; RAL9003 signal white
- Dimensions: 154 mm x 98 mm x 39 mm

Increase in the CO₂ concentration of the air in a room

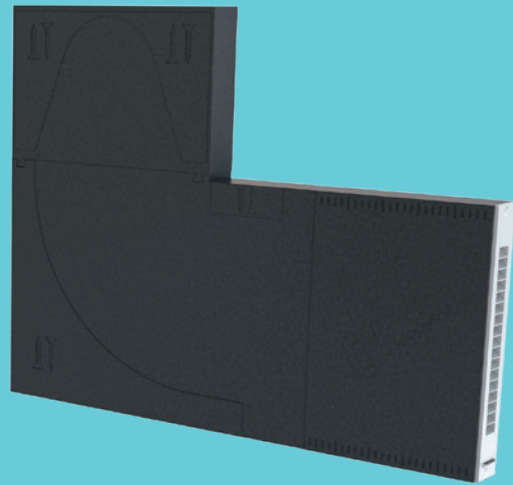


Example of device control:



Vent duct EPP

The vent duct ensures a clear, undisturbed facade view and optimum sound absorption.



The new EPP vent duct offers the optimum solution for an undisturbed view of the facade and extremely high sound absorption of up to 72 dB. It can be adapted particularly flexibly and in an installation-friendly way to the building structure and combined with numerous AERO ventilation units: For example, with the AEROVITAL ambience modern wall-mounted ventilator, the AEROPAC compact sound absorbing ventilator or the AEROTUBE pipe wall ventilator system.

Huge significance was placed on flexibility in the development of the new vent duct. For installation, it can be adapted on site both in terms of its accurate positioning and its easy cropping. This also applies to the interior installation of the ventilation unit that can be accomplished either beside or at an incline above the window. In addition, AERO EPP vent duct also scores in relation to aspects of sound absorption because it enables the achievement of extremely high sound absorption requirements up to 72 dB. The AERO EPP vent duct is suitable for new builds and renovations, in particular for thermal insulation composite systems (WDVS).

EPP vent duct product benefits:

- Flexible adaptation to the building structure on site, easy installation
- Sound absorption pipe individually adaptable to wall thickness
- Easy plastering thanks to plaster cover to protect the duct
- Suitable for new buildings and renovations also for residential buildings and office buildings
- Architectural integration in an undisturbed view of the facade
- Suitable for wfor the wall-mounted ventilators AEROVITAL ambience, AEROPAC and AEROTUBE in versions DD, WRG smart and AZ smart
- High sound absorption (up to 72 dB)

Flexible and easy installation:

- Installation is possible either laterally in the window reveal (SFL) or in the window reveal (FL)
- It can be adapted conveniently to the building structure on site both in terms of its accurate positioning and its easy cropping



VENT DUCT FL AND SFL



FACADE VIEW



SFL AEROTUBE VERSION INTERNAL VIEW

Wall-mounted ventilators	AEROPAC®		
Ventilator type	DD	SN	smart
Sound absorption in accordance with DIN EN 20140-10/ $D_{n,e,w}$	50 dB		
Air throughput at 2 Pa	11 m³/h		
Air throughput at 4 Pa	17 m³/h		
Air throughput at 5 Pa	20 m³/h		
Air throughput at 7 Pa	25 m³/h		
Air throughput at 8 Pa	26 m³/h		
Air throughput at 10 Pa	31 m³/h		
Air throughput with blower		G3: 30 –180 m³/h F5: 15 – 160 m³/h Activated carbon: 15 – 160 m³/h	
Inherent noise LpA (measured in accordance with DIN DIN EN ISO 3745 or 3741) at 8 dB room insulation		at 60 m³/h = 20 dB(A)	
Heat recovery efficiency			
Type of filter	G3, F5, activated carbon		
Manual closing	Yes		
Motorised closing			
Remote control			optional WLAN: SIEGENIA Comfort app*
Humidity control			
Timer control		Yes	Yes
Height	467 mm		
Depth	132 mm		
Width	270 mm		
Installation location	Jamb Wall (roof area)		
CE electrical connection		230 V	
Electrical power consumption		Min. blower level = 2 W 60 m³/h = 5 W Max. blower level = 27 W	
SEV class			
Surface/colour	PVC/alpine white, high-gloss		
Additional information		Cable length: Max. 4.5 m long, white, with Europlug Permanent mains connection possible *Notes on compatibility at www.siegenia.com/qr/comfort-app/faq Can be combined with vent duct EPP	

Wall-mounted ventilators	AEROTUBE			
Ventilator type	AZ smart	WRG smart	DD 110*	DD 160*
Sound absorption in accordance with DIN EN 20140-10/ $D_{n,e,w}$	34 dB	35 dB	58 dB	54 dB
Air throughput at 2 Pa			7 m³/h	8 m³/h
Air throughput at 4 Pa			9 m³/h	12 m³/h
Air throughput at 5 Pa			11 m³/h	14 m³/h
Air throughput at 7 Pa			12 m³/h	17 m³/h
Air throughput at 8 Pa			13 m³/h	18 m³/h
Air throughput at 10 Pa			16 m³/h	22 m³/h
Air throughput with blower	24 – 43 – 58 m³/h	15 – 32 – 45 m³/h		
Inherent noise LpA (measured in accordance with DIN DIN EN ISO 3745 or 3741) at 8 dB room insulation	26 dB(A) to 46 dB(A)	25 dB(A) to 46 dB(A)		
Heat recovery efficiency		Up to 90%		
Type of filter	G3		G2	
Manual closing	Yes		Yes	
Motorised closing	optional			
Remote control	Yes WLAN: SIEGENIA Comfort app*			
Humidity control	Yes			
Timer control				
Height	279 mm		178 mm	
Depth	63 mm		10 mm	
Width	279 mm		178 mm	
Installation location	Wall		Wall	
CE electrical connection	230 V			
Electrical power consumption	Max. blower level = 4.1 W	Max. blower level = 4.3 W		
SEV class	C	A+		
Surface/colour	PVC/white, high-gloss		PVC/white, high-gloss	
Additional information	Pipe diameter: 160 mm Can be combined with vent duct EPP *Notes on compatibility at www.siegenia.com/qr/comfort-app/faq		Pipe diameter: 110 mm Can be combined with vent duct EPP Solutions with EPP vent duct can be designed with sound absorption of up to 72 dB *Data for inside front cover E18, 7.5 mm tilted position	Pipe diameter: 160 mm Can be combined with vent duct EPP Solutions with EPP vent duct can be designed with sound absorption of up to 72 dB Optionally available with wind pressure barrier or up to four sound insulation elements *Data for inside front cover E18, 7.5 mm parallel

Wall-mounted ventilators	AEROVITAL® ambience		AEROVITAL®	AEROLIFE®	AEROPLUS®
Ventilator type		smart			
Sound absorption in accordance with DIN EN 20140-10 / $D_{n,e,w}$	54 dB	54 dB	52 dB	52 dB	40 dB
Air throughput at 2 Pa					
Air throughput at 4 Pa					
Air throughput at 5 Pa					
Air throughput at 7 Pa					
Air throughput at 8 Pa					
Air throughput at 10 Pa					
Air throughput with blower	25 – 60 m³/h Level 1: 25 m³/h Level 3: 42 m³/h Level 4: 55 m³/h	25 – 60 m³/h Level 1: 25 m³/h Level 3: 42 m³/h Level 4: 55 m³/h	Level 1: 25 m³/h Level 4: 35 m³/h Level 10: 60 m³/h	Level 1: 29 m³/h Level 2: 35 m³/h Level 3: 60 m³/h	10 m³/h to 20 m³/h
Inherent noise LpA (measured in accordance with DIN EN ISO 3745 or 3741) at 8 dB room insulation	Level 1: 20 dB(A) Level 3: 22 dB(A) Level 4: 30 dB(A)	at 55 m³/h = 30dB (A)	Level 1: 23 dB(A) Level 4: 30 dB(A) Level 10: 40 dB(A)	Level 1: 26 dB(A) Level 2: 30 dB(A) Level 3: 40 dB(A)	26 dB(A) to 40 dB(A)
Heat recovery efficiency	Up to 85%		Up to 73%	Up to 66%	Up to 68%
Type of filter	M5		Supply air: F7 Exhaust air: G3	Supply air: F7 Exhaust air: G3	G2
Manual closing			Yes	Yes	
Motorised closing	Yes				Optional pipe lock
Remote control		WLAN: SIEGENIA Comfort app*	Yes		
Humidity control	Yes		Yes	Yes	Yes
Timer control		Yes			
Height	690 mm		467 mm	467 mm	350 mm
Depth	185 mm		178 mm	178 mm	155 mm
Width	618 mm		490 mm	490 mm	220 mm
Installation location	Wall (on-wall or in-wall)				Wall (on-wall or in-wall)
CE electrical connection	230 V		230 V	230 V	230 V with 12-V-power pack corrector option with mains connection
Electrical power consumption	AEROVITAL ambience: max. 12 W AEROVITAL ambience smart: max. 13 W		Level 1: 10 W Level 4: 17 W Level 10: 32 W	Level 1: 11 W Level 2: 17 W Level 3: 32 W	4 to 7 W
SEV class	A	A+	B	B	A
Surface/colour	PVC/white, high-gloss		PVC/white, matt	PVC/white, matt	PVC/white, high-gloss
Additional information	Cable length: 4.5 m long with Europlug Permanent mains connection possible Sound absorption 58 dB thanks to sound absorption pipe Can be combined with vent duct EPP *Notes on compatibility at www.siegenia.com/qr/comfort-app/faq Building control certification (DIBT): This wall-mounted ventilator is additionally subjected to the approval procedure of DIBT (III57-1.51.3-6/14)		Cable length: 1.2 m long with Europlug Permanent mains connection possible Activated carbon filter upon request	Cable length: 1.2 m long with Europlug Permanent mains connection possible Activated carbon filter upon request	Cable length: 2 m long with Europlug Permanent mains connection possible Suitable for humid rooms **For in-wall installation: please specify this when ordering as an internal transformer will be fitted

Smart operation via SIEGENIA Comfort app. One app controls everything.

Comfort starts with easy operation: the SIEGENIA Comfort app allows you to operate all "smart" versions of SIEGENIA devices easily using your own smartphone or tablet. An additional remote control is not necessary.

Maximum convenience is achieved by different functions, e.g. automatic mode or the timer, into which up to five times can be programmed for user-dependent ventilation, or by an indicator of the current air humidity or temperature.

The SIEGENIA Comfort app is free of charge. SSL encryption ensures the secure communication that you normally experience during banking transactions.

Ease of use at a glance:

- Operation of the "smart" ventilator via tablet and smartphone
- Filter change indicator
- Display of the room temperature in °C and the relative air humidity in %
- Activation/deactivation of automatic mode
- Freely selectable mode of operation
- Direct operation of the WLAN-capable devices or integration in the home network is possible
- Simple and intuitive commissioning
- Notes on compatibility at www.siegenia.com/qr/comfort-app/faq



EASY OPERATION OF THE "SMART"-
DEVICES BY SIEGENIA Comfort APP OR
ACTIVATION OF THE AUTOMATIC
FUNCTIONS.

SIEGENIA®

brings spaces to life

Head Office:
Industriestraße 1–3
57234 Wilnsdorf
GERMANY

Phone: +49 271 3931-0
Telefax: +49 271 3931-333
info@siegenia.com
www.siegenia.com



You can find address details for our
international sites at: www.siegenia.com

SIEGENIA worldwide:

Austria Phone: +43 6225 8301
Belarus Phone: +375 17 3143988
Benelux Phone: +31 85 4861080
China Phone: +86 316 5998198
France Phone: +33 3 89618131
Germany Phone: +49 271 39310
Great Britain Phone: +44 2476 622000

Hungary Phone: +36 76 500810
Italy Phone: +39 02 9353601
Poland Phone: +48 77 4477700
Russia Phone: +7 495 7211762
South Korea Phone: +82 31 7985590
Switzerland Phone: +41 33 3461010
Turkey Phone: +90 216 5934151
Ukraine Phone: +380 44 4054969

Contact your dealer: